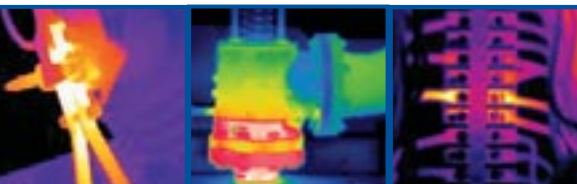


ThermaCAM® B20

The ThermaCAM® B20 infrared camera offers a noninvasive means of monitoring and diagnosing the condition of buildings. It provides immediate documentation of as-built or post-restoration quality, plumbing and building envelope water leakage, post-flood and fire water-damaged material assessment, energy use inefficiency, roofing, and even rodent or pest discovery.



- CRISP, HIGH QUALITY IMAGES
- EXCELLENT THERMAL SENSITIVITY
- PRECISION NON-CONTACT TEMPERATURE MEASUREMENT
- RUGGED, LIGHTWEIGHT AND PORTABLE
- DOWNLOAD IMAGES EASILY TO A PC
- FULLY RADIOMETRIC JPEG IMAGE STORAGE
- INTEGRATED SOFTWARE FOR ROBUST INSPECTION REPORTING

FAST DETECTION FOR FAST ACTION

Use the B20 to instantly image entire rooms, inspect places that can't be physically reached with moisture meters. Reveal wet conditions behind surfaces such as enameled walls and wallpaper that don't readily water stain, track leaks to their source, monitor the drying process, and confirm when a structure is dry. An exclusive, automatic built-in dew point indicator provides valuable humidity data to facilitate moisture analysis. Plus, you can enter text comments and record voice comments with images to annotate your field data in real-time.

RUGGED, ERGONOMIC & LIGHTWEIGHT

At only 3 lbs (1.4 kg), the ultra-portable P20 fits comfortably in the palm of your hand. Lightweight, long-life, exchangeable Lithium-ion batteries assure uninterrupted in-field inspections.

OUTSTANDING IMAGE QUALITY

High thermal sensitivity lets you see problems clearly. The state-of-the-art, fourth generation 320 x 240 uncooled microbolometer FPA detector with built-in auto focus capacity delivers crisp, detailed high-resolution images.

View crisp color images in the integral high resolution viewfinder, ideal for outdoor inspections. Six color palette options and a suite of supplementary optics make the B20 perfect for building diagnostic applications, regardless of target size or distance.

EASY TO OPERATE

User-friendly interfaces including joystick, intuitive menus, and three direct access buttons allow easy one-handed operation. For increased flexibility, control camera functions by four direct access buttons located on the side of the B20.

ENHANCED CONNECTIVITY FOR DOWNLOADING AND DOCUMENTING

Download JPEG images with full 14-bit thermal accuracy and all other relevant measurement data from the removable CompactFlash® cards directly to your PC with ThermaCAM Connect™ software (included) and standard USB or serial cables. Document your findings simply by inserting JPEGs into your favorite word processing program. In addition, standard composite video and S-video outputs provide real-time video with high image definition.

SMART SYSTEM IMPROVES PRODUCTIVITY

System status display indicates power, communication and storage modes. There's no need to worry or guess about battery life or storage space. Configurable sleep mode increases camera life and productivity.

UPGRADEABILITY

The B20 is available with a plug-in remote control assembly that includes a 4-inch color LCD monitor. This remote control can be attached to the camera body or used to operate the camera via the coil-cord connector. It features a joystick and button controls that replicate those on the camera itself. The exclusive FLIR Laser LocatIR™ target designator is also available as an option.



THERMACAM® B20 TECHNICAL SPECIFICATIONS

IMAGING PERFORMANCE

Field of view/min focus distance	24° x 18° / 0.3 m
Spatial resolution (IFOV)	1.3 mrad
Electronic zoom function	2,4 interpolating
Focusing	Automatic or manual
Digital image enhancement	Normal
Detector Type	Focal plane array (FPA), uncooled microbolometer
	320 x 240 pixels
Spectral range	7.5 to 13 µm

IMAGE PRESENTATION

Viewfinder	Built-in high resolution color LCD (TFT)
Video output	RS170 EIA/NTSC or CCIR/PAL composite video, S-video
Color palettes	6 options

MEASUREMENT

Temperature ranges	-20 to +150° C (-4° to +302° F)
Accuracy (% of reading)	± 2 °C or ± 2%
Measurement modes	Fixed spot, isotherm; minimum/maximum/differential calculator
Measurement corrections	Reflected ambient, distance, relative humidity, external optics. Automatic, based on user input
Lens recognition and measurement corrections	Automatic
Alarming	Audible and visual >T, <T

IMAGE STORAGE

Type	Removable CompactFlash card (128 MB)
File format	Standard JPEG. 14 bit measurement data included.

LENSES

Lens identification	Automatic
---------------------	-----------

SYSTEM STATUS INDICATOR

LCD Display	Shows status of battery and storage media. Indication of power, communication and storage modes.
-------------	--

POWER SOURCE

Battery type	Lithium-ion, rechargeable, field-replaceable
Battery operating time	2 hours continuous operation
Battery charging	In camera or 2 bay intelligent charger 12V
In-camera battery charging	AC adapter or 12V from car
AC operation	AC adapter 110/220 VAC, 50/60Hz
Power saving	Automatic shutdown and sleep mode (user-selectable)

ENVIRONMENTAL

Operating temperature range	-15°C to +50°C (5°F to 122°F)
Storage temperature range	-40°C to +70°C (-40°F to 158°F)
Humidity	Operating and storage 10% to 95%, non-condensing
Encapsulation	IP 54 IEC 359
Shock	Operational: 25G, IEC 68-2-29
Vibration	Operational: 2G, IEC 68-2-6

PHYSICAL CHARACTERISTICS

Weight	1.4 kg (3.1 lbs), including battery
Size (L x W x H)	1.2kg (2.6lbs), excluding battery
Tripod mounting	100mm x 120mm x 220 mm (3.9" x 4.7" x 8.7")
	1/4"- 20

INTERFACES

USB / RS232	Image, measurement data, voice transfer to PC
-------------	---

THERMACAM® B20 SYSTEM INCLUDES:

- IR camera
- Carrying case
- Lens cap, shoulder strap, hand strap
- Manual (multi-lingual)
- Batteries (2)
- Power supply including cable
- Battery charger including cable
- Video cable RCA-plug
- USB-cable
- S-video cable
- CompactFlash card
- Tripod mount hole (1/4" x 20)

OPTIONS AVAILABLE:

- Power cable for 12V from car (Std plug)

LENSES (OPTIONAL)

Field of view/minimum focus distance

- 1.0x Standard (24° x 18°/0.3m)
- 0.5x Wide angle (45° x 34°/0.1m)
- 0.3x Wide angle (80° x 60°/0.1m)
- 200 µm Close-up (64mm x 48mm/150mm)
- 100 µm Close-up (34mm x 25mm/80mm)
- 46 µm Macro (15mm x 11mm/17mm)

INTERFACES

USB / RS232 or IrDA	Image measurement data
---------------------	------------------------



B20 with optional remote control assembly



The Global Leader in Infrared Cameras

1-800-GO-INFRA
www.flirthermography.com/b20data

FLIR SYSTEMS, BOSTON
Americas Thermography Center
16 Esquire Road
North Billerica, MA 01862
Telephone: +1 (978) 901-8000
Toll Free: +1 (800) GO-INFRA

FLIR SYSTEMS, AB
Worldwide Thermography Center
Rinkebyvagen 19
SE-182 11
Danderyd, SWEDEN
Telephone: +46 (0) 8 753 25 00

FLIR SYSTEMS, LTD
5230 South Service Road, Suite 125
Burlington, ON L7L 5K2
CANADA
Telephone: +1 800 613 0507